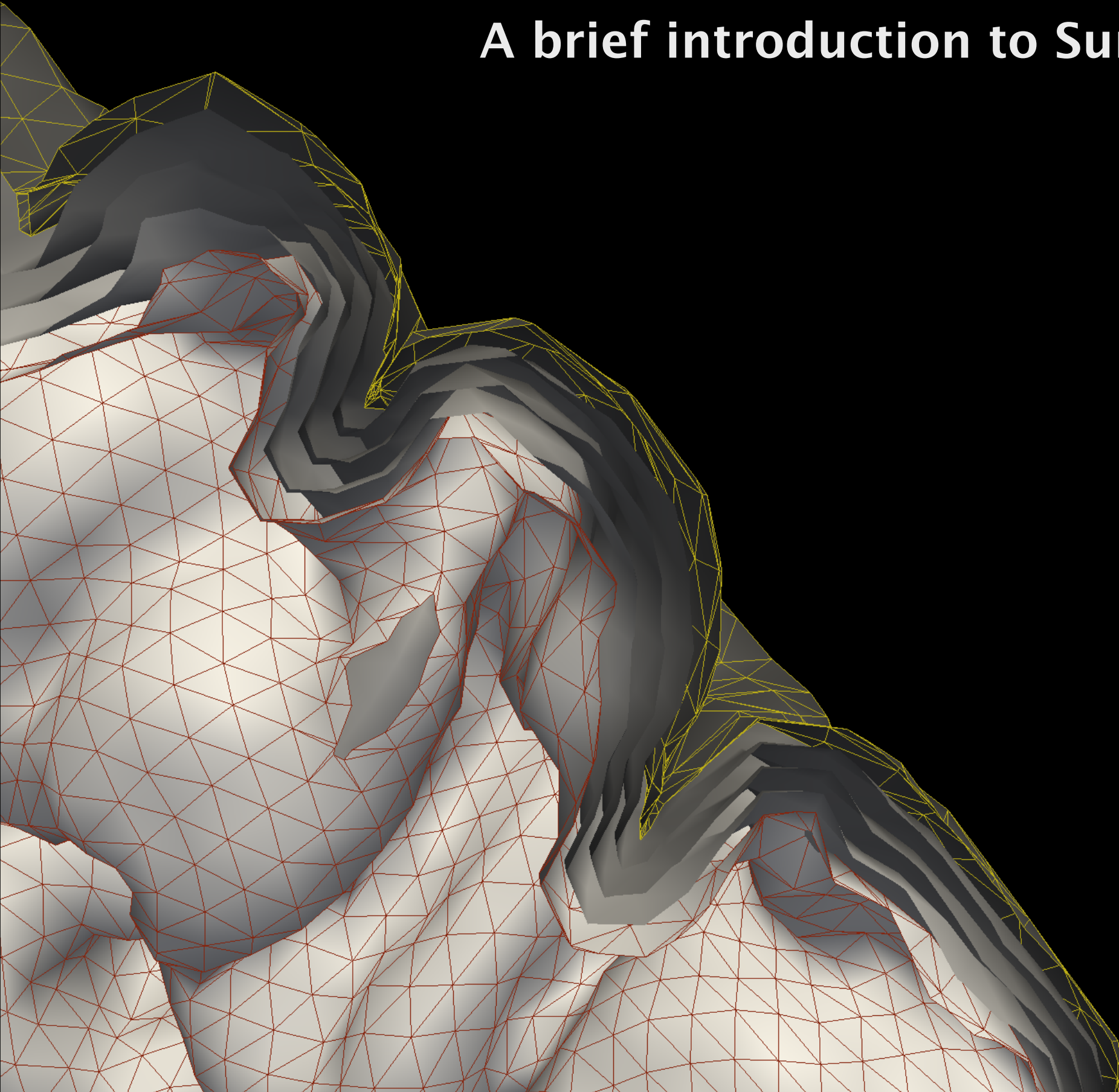


A brief introduction to SurfStat

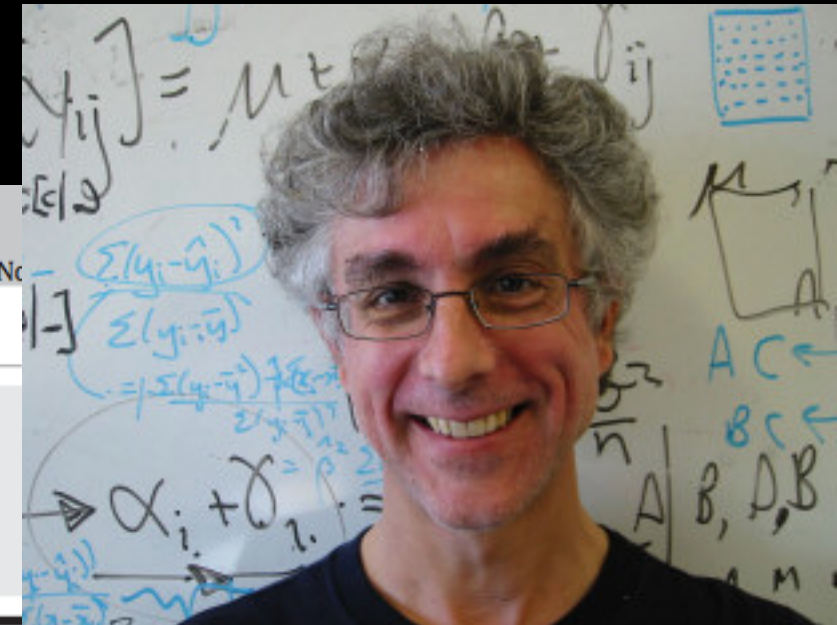
Boris Bernhardt, PhD

NeuroImaging of Epilepsy Lab

boris@bic.mni.mcgil.ca



Keith Worsley (1951–2009)



ARTICLE IN PRESS

YNIMG-06173; No

NeuroImage xxx (2009) xxx–xxx

Contents lists available at ScienceDirect

NeuroImage

journal homepage: www.elsevier.com/locate/ynimg



In Memoriam

A Tribute to: Keith Worsley – 1951–2009

Jonathan Taylor, Alan Evans, Karl Friston*

Department of Statistics, Stanford University, CA, USA

The McConnell Brain Imaging Centre, McGill University, Montreal, Canada

The Wellcome Trust Centre for Neuroimaging, University College London, UK

Legend has it that Keith's introduction to neuroimaging followed a chance encounter in a verdant corner of McGill University. One of us (Alan Evans) found Keith gathering maple leaves in the fond hope that variations in their shape would provide a useful source of data, against which to test his statistical ideas. This was in the late 80s when PET scanners had just started producing images of cerebral hemody-

psychophysical data (Worsley et al., 2007), through to the analysis of foot pressure images in the clinic (Pataky and Goulermas, 2008); from astrophysics though to meteorology (Worsley, 2002) In short, Keith was responsible for a paradigm shift that enabled statistical inference to move from scalar statistics to statistical fields or images.

These advances were particularly important for neuroimaging

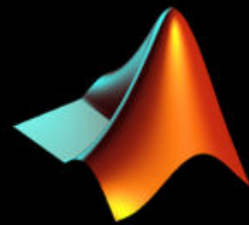
What can SurfStat do with your surfaces?

- ▶ read data
- ▶ perform surface-based statistical analysis
 - ▶ Model fitting
 - ▶ contrast estimation
 - ▶ multiple comparisons correction
- ▶ display results

- ▶ Fast, flexible, extremely nice Matlab coding
- ▶ <http://www.math.mcgill.ca/keith/surfstat/>

To get started

1. Download SurfStat from: <http://www.math.mcgill.ca/keith/surfstat/>
2. Launch Matlab (free from McGill IT)

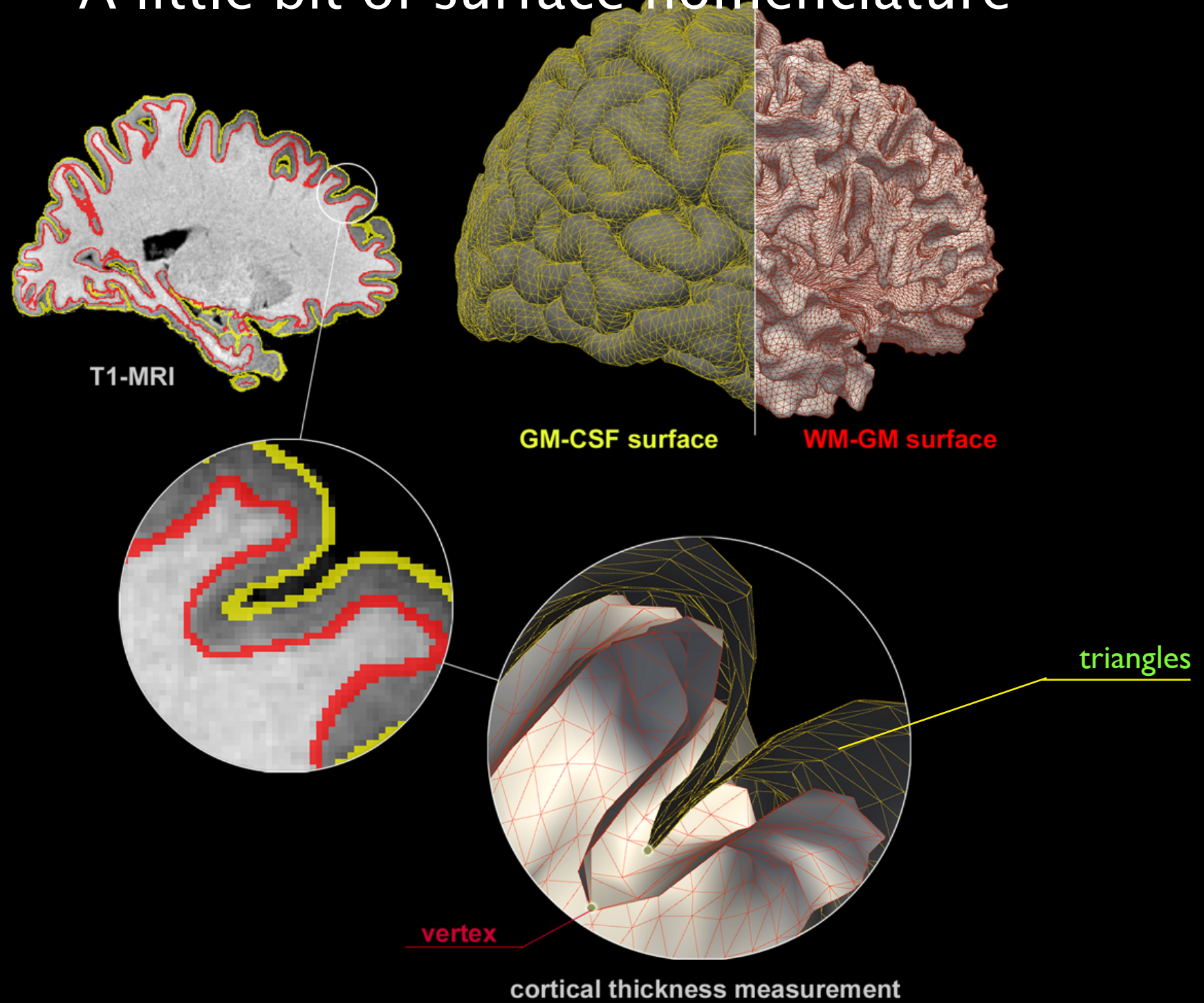


3. Add SurfStat to matlab path

```
>> addpath( PathToSurfStat )
```

```
>> addpath ( '/usr/local/matlab7a/toolbox/surfstat' )
```


A little bit of surface nomenclature



Reading 1 surface

```
>> S = SurfStatReadSurf1( SurfaceFile )
```

SurfaceFile can be

surface files of individual cases (.obj for CIVET, e.g. lh.white for FS)

or template surfaces

```
surf_reg_model_left_81920.obj (CIVET)
```

```
lh.white, lh.pial... of fsaverage (FreeSurfer)
```

`S.coord` = vertex coordinates on the mesh (e.g., 3x40962 in CIVET)

e.g., -20, 33, 15 – x,y,z coordinates in MNI space

`S.tri` = triangles that make up the mesh (81920x3)

Reading 1 surface feature

```
>> T = SurfStatReadData1( ThicknessFile )
```

ThicknessFile can be .txt (CIVET) .mgh (FreeSurfer)

T is 1 x k vector

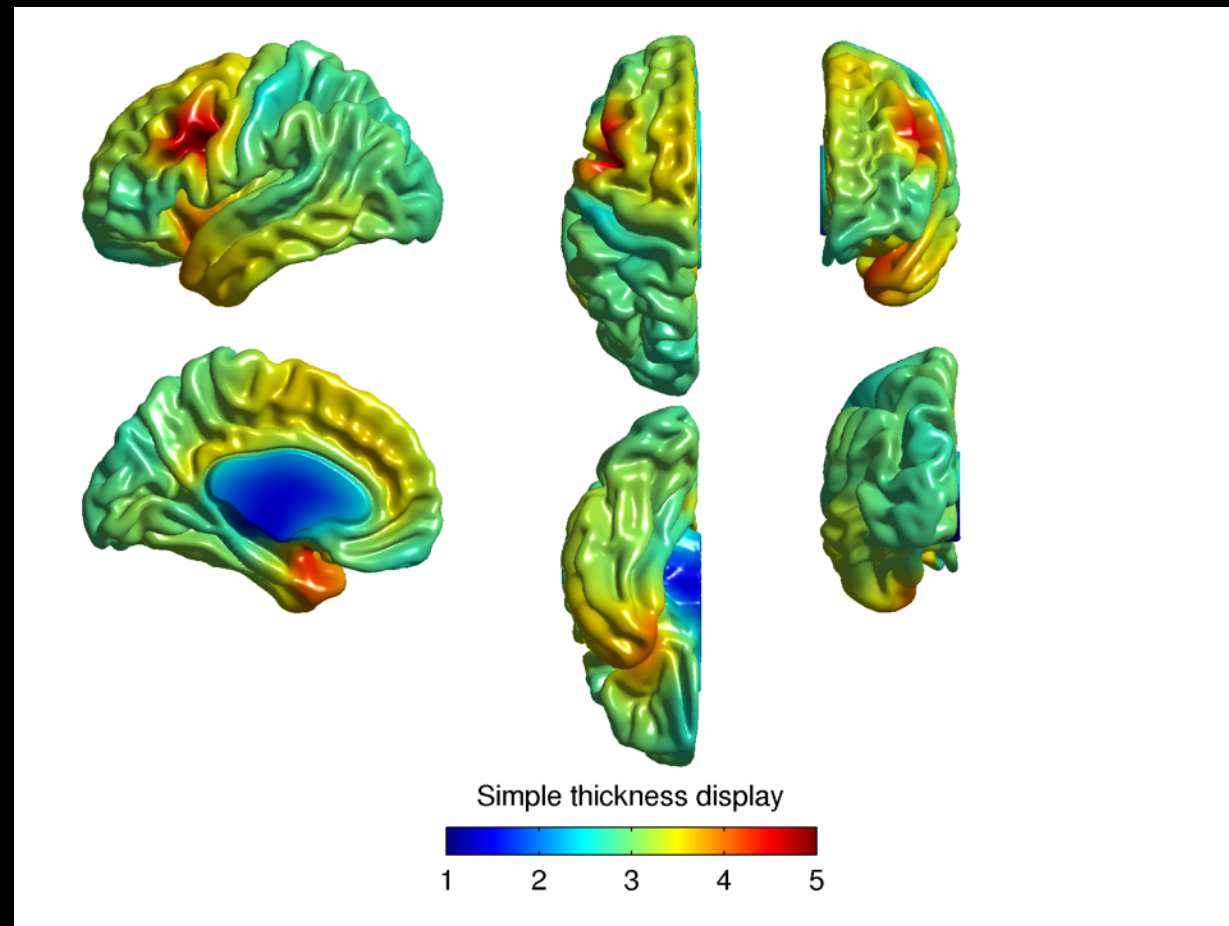
```
[2.13445 2.1234 2.45633 2.34566 ...]
```

Displaying surface data

```
f=figure;
```

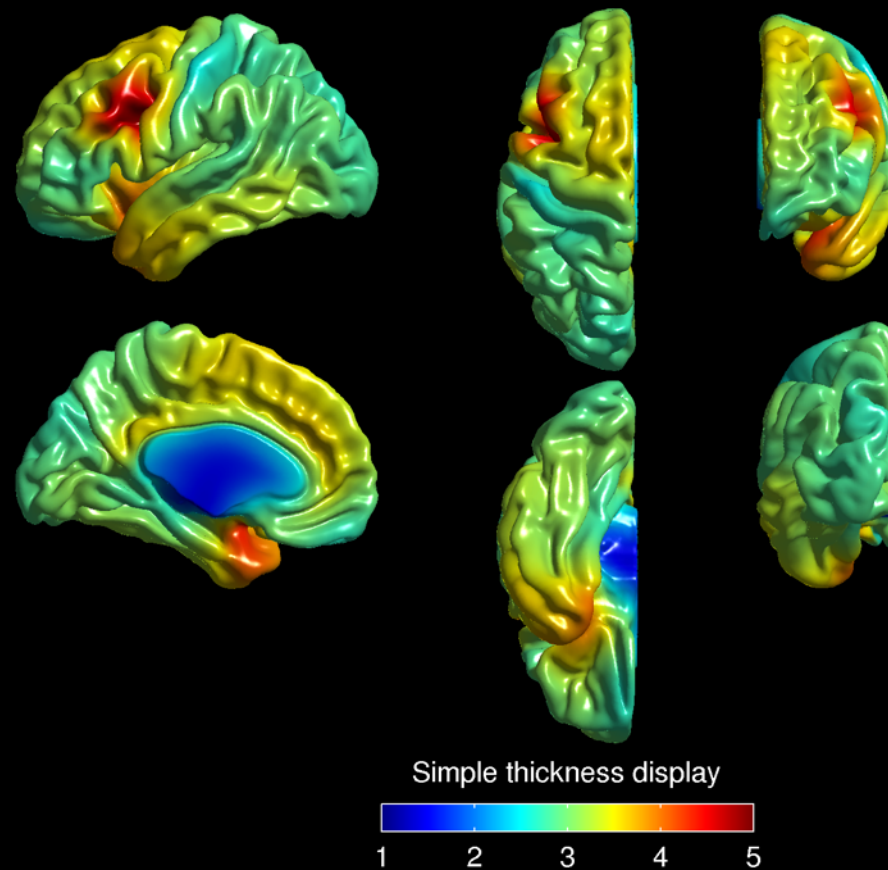
```
SurfStatView(T, S, 'Simple thickness display')
```

```
SurfStatColLim([1 5]), colormap('jet')
```



Displaying surface data

```
f=figure;  
  
SurfStatView(T, S, 'Simple thickness display','black')  
  
SurfStatColLim([1 5]), colormap( 'jet')
```



Reading many subjects

Thickness

```
T = SurfStatReadData( [namesleft, namesright] )
```

Surfaces

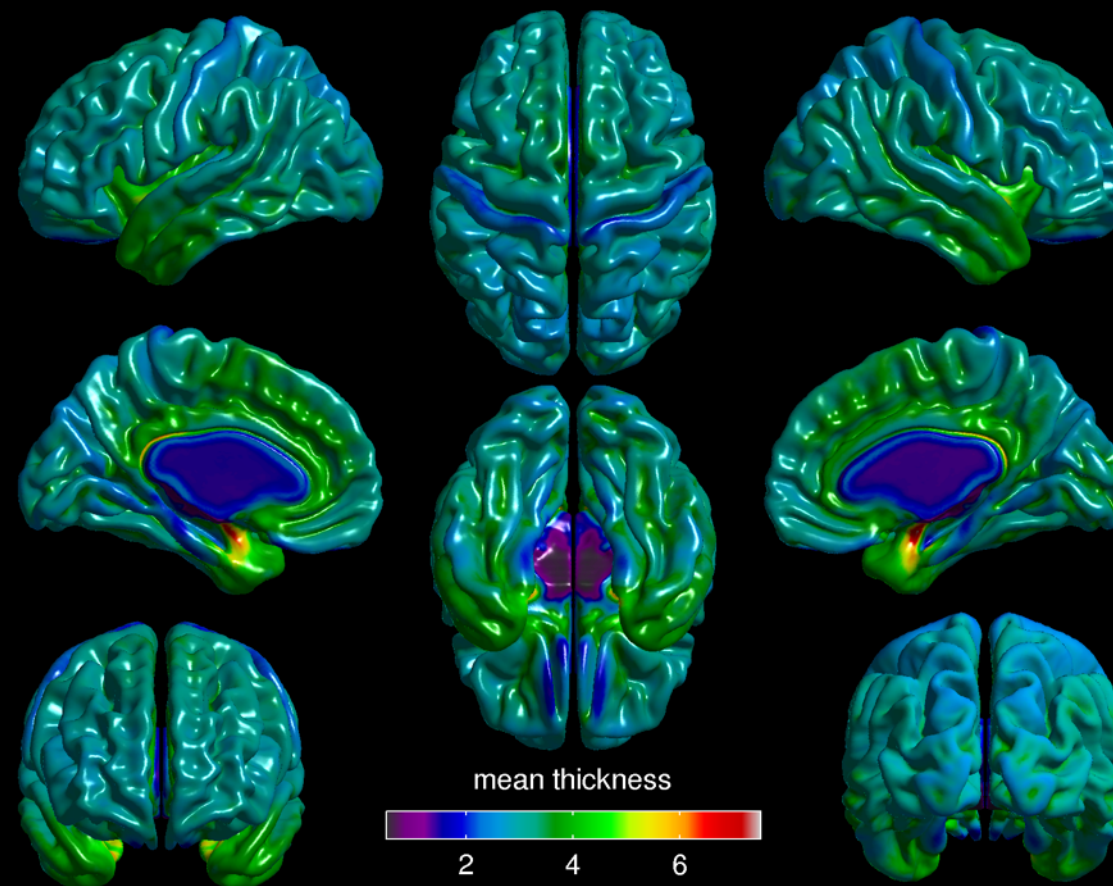
```
S = SurfStatReadSurf( [namesleft, namesright] )
```

```
S = SurfStatAvSurf( {'surf_reg_model_left.obj', ...  
                    'surf_reg_model_right.obj'}
```

Display some simple statistics

```
me = mean(T,1);
```

```
f=figure; SurfStatViewData(me, S, 'mean thickness','black')
```



Simple linear models

say you have a variable `group`

```
group = [ 'Patient', ..., 'Control', ... ] ;
```

of $n \times 1$ length, then

```
G = term(group)
```

will convert the variable into a term

To specify a linear model, type

```
Model = 1 + G
```

equivalent to $y = \beta_0 + \beta_1 * G + \varepsilon$

Simple linear models

You can then use

```
slm = SurfStatLinMod(T, Model, S)
```

to estimate the parameters in the model

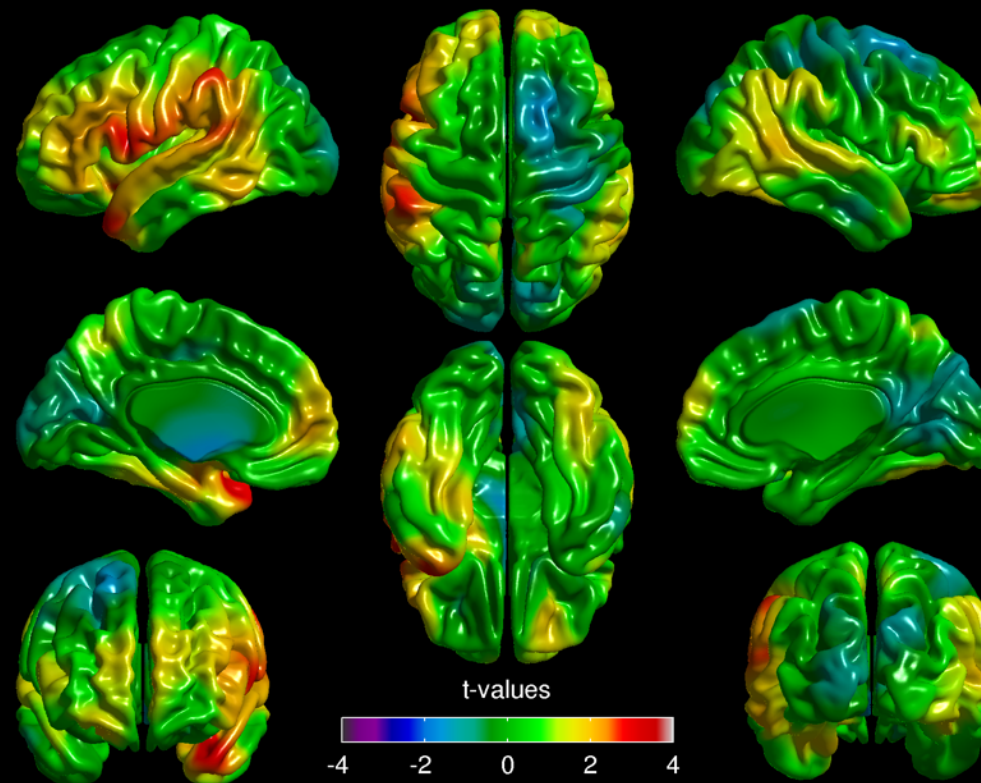
```
slm.X, slm.df, slm.coeff, slm.SSE, slm.tri, slm.resl
```

Simple linear models

and use SurfStatT to estimate the effect of a contrast

```
slm = SurfStatT(slm,G.Control-G.Patient)
```

```
f=figure; SurfStatViewData(slm.t, S, 't-val','black')
```



Simple linear models

Different models and contrasts are possible

```
A = term(Age); G = term(Group);
```

```
Model = 1 + A + G
```

```
slm = SurfStatLinMod(T, Model, S)
```

```
slm = SurfStatT(slm, G.Controls-G.Patients)
```

is a model that assesses group differences, controlling for age

$$y = \beta_0 + \beta_1 * A + \beta_2 * G + \varepsilon$$

Simple linear models

Different models and contrasts are possible

```
A = term(Age); G = term(Group);
```

```
Model = 1 + A + G
```

```
slm = SurfStatLinMod(T, Model, S)
```

```
slm = SurfStatT(slm, -Age)
```

is a model that assesses an effect of age across both groups

Simple linear models

Different models and contrasts are possible

```
A = term(Age); G = term(Group);
```

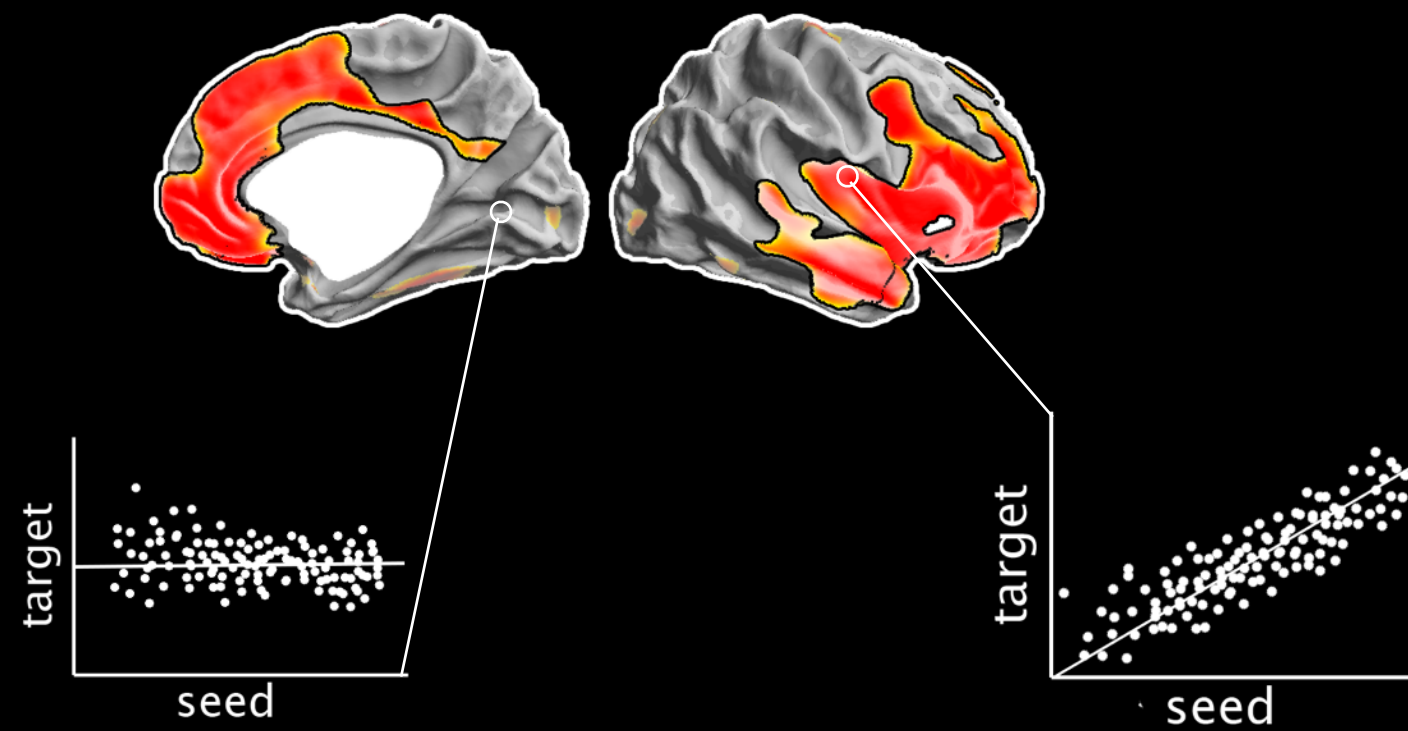
```
Model = 1 + A + G + A*G
```

```
slm = SurfStatLinMod(T,Model, S)
```

```
slm = SurfStatT(slm, (-Age.*G.Patients)-(-Age.*G.Controls))
```

is a model that assesses the interaction between age and group, assessing a faster age decline in thickness in patients than controls

Structural covariance analysis



Lerch et al. (2006) NeuroImage
Alexander-Bloch et al. (2013) Nat Rev Neurosci

Structural covariance analysis

Different models and contrasts are possible

```
Seed = T(:,674);
```

```
Se = term(Seed);
```

```
Model = 1 + Se
```

```
slm = SurfStatLinMod(T,Model, S)
```

```
slm = SurfStatT(slm, Seed )
```

is a model that assesses the correlation between a seed and cortical thickness at each surface point

Structural covariance analysis

Different models and contrasts are possible

```
Seed = T(:,674);
```

```
Se = term(Seed); G = term(Group);
```

```
Model = 1 + Se + G + Se*G
```

```
slm = SurfStatLinMod(T,Model, S)
```

```
slm = SurfStatT(slm,(G.Controls.*Seed)-(G.Patients.*Seed))
```

is a model that assesses the interaction between seed and group, assessing a stronger correlation with seed thickness in controls than patients

Mixed effects models

One can also analyse mixed-effects models

`Model = 1 + random(Subject) + A + I`

to study clustered, hierarchical data

e.g., within-subject change (e.g. longitudinal change)

e.g., data of correlated observations, siblings, twins,...

cf. <http://cran.r-project.org/doc/contrib/Fox-Companion/appendix-mixed-models.pdf>

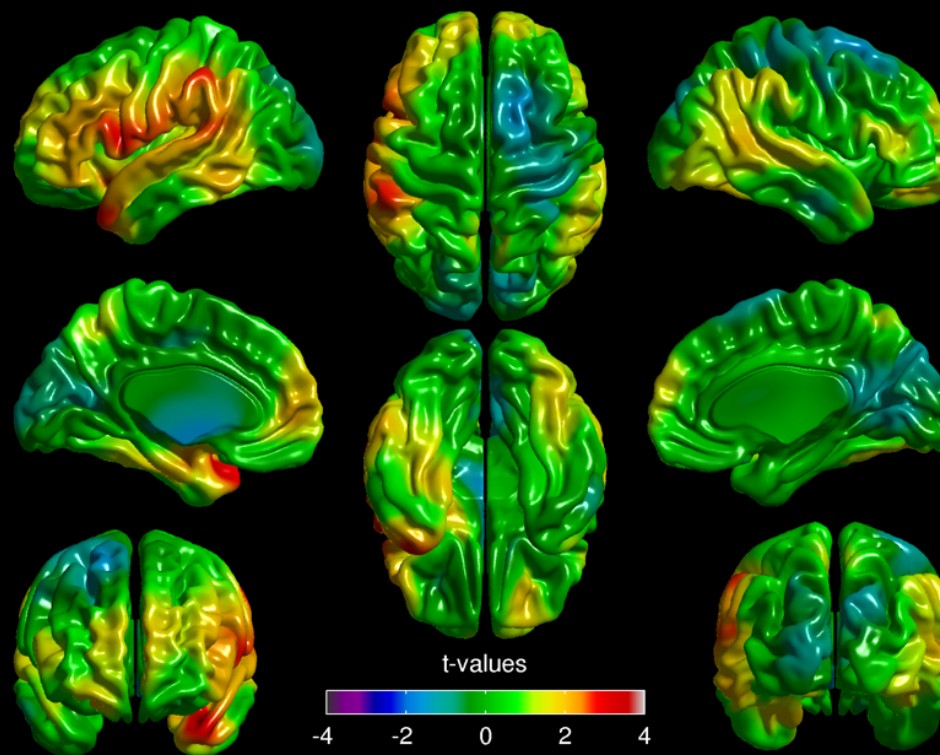
Correction for multiple comparisons

1. no correction

```
p = 1 - tcdf(slm.t,slm.df)
```

```
f=figure; SurfStatViewData(p, S, 'p-value','black')
```

```
SurfStatColLim([0 0.05])
```

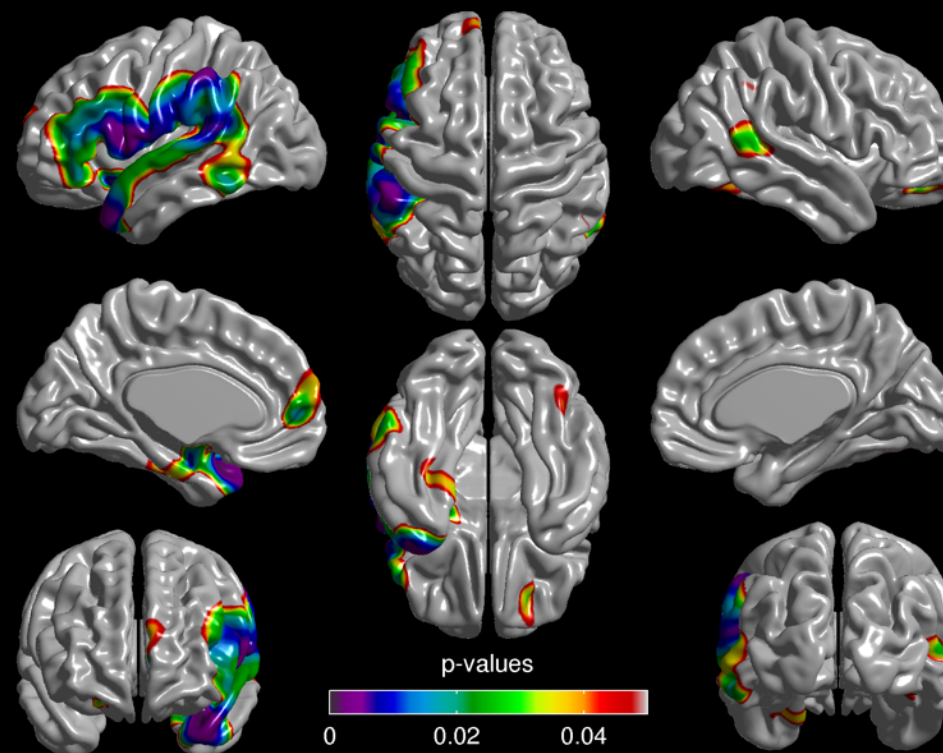


Correction for multiple comparisons

1. no correction

```
p = 1 - tcdf(slm.t,slm.df)
```

```
f=figure; SurfStatViewData(p, S, 'p-value','black')  
SurfStatColLim([0 0.05])
```



Correction for multiple comparisons

2. Bonferroni

```
mask = SurfStatMaskCut(S)
```

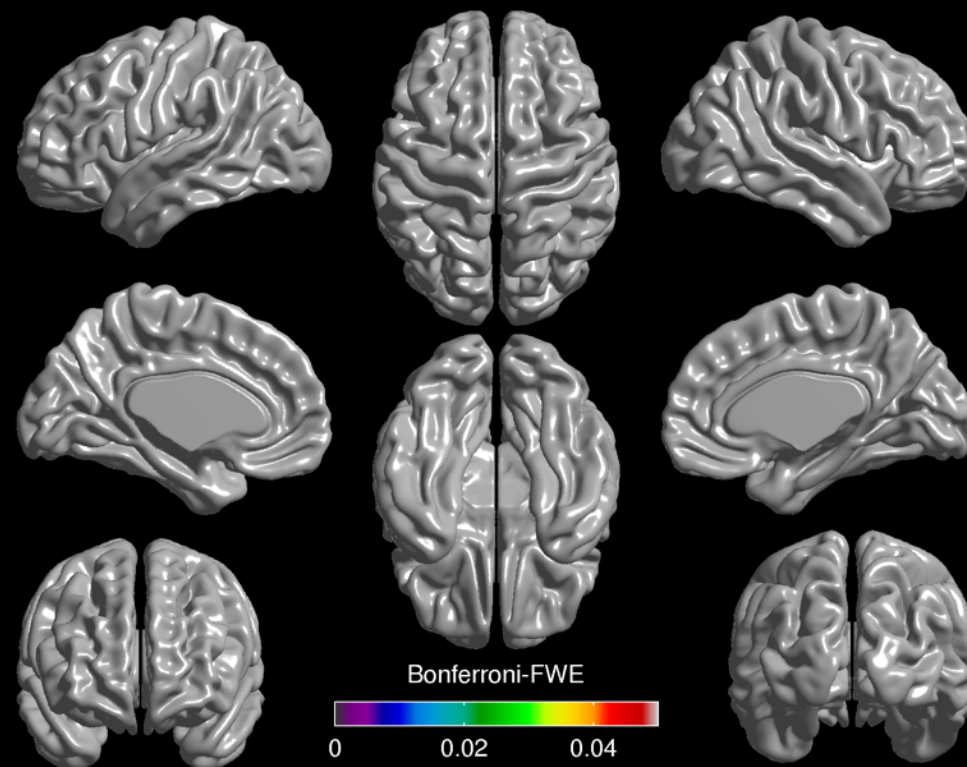
```
p = 1 - tcdf(slm.t,slm.df)
```

```
f=figure; SurfStatViewData(p*sum(mask), S, 'Bonferroni-FWE')
```

```
SurfStatColLim([0 0.05])
```

Correction for multiple comparisons

2. Bonferroni

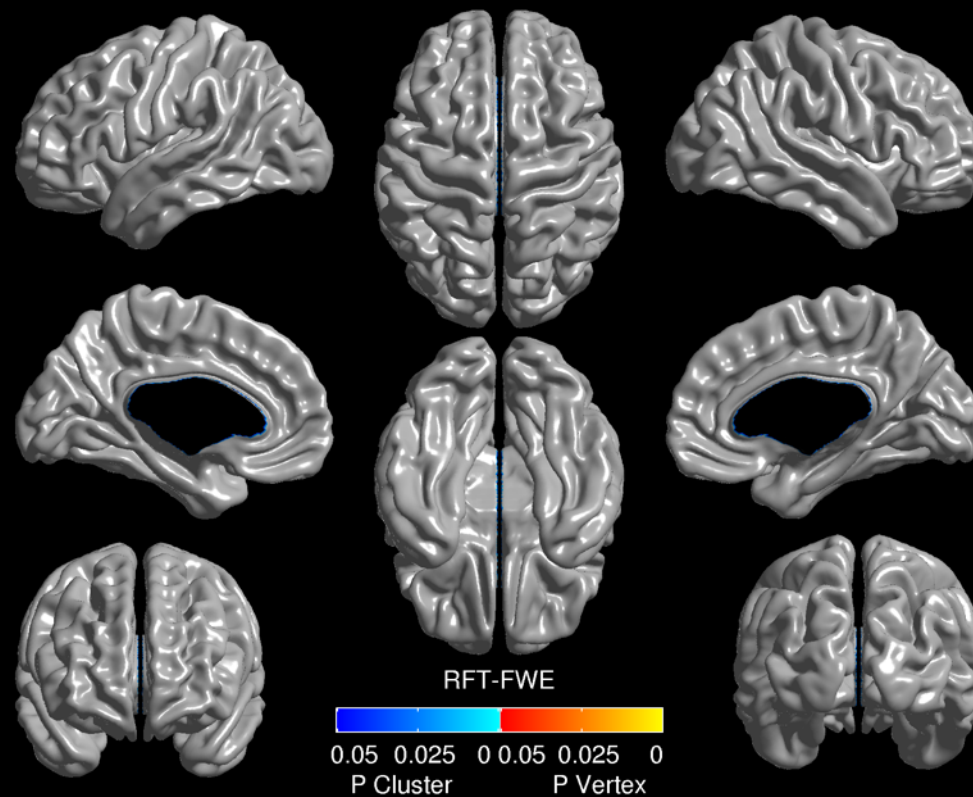


Correction for multiple comparisons

3. Random field theory-correction (Worsley et al. 1999)

```
[pval,peak,clus,clusid] = SurfStatP(slm,mask)
```

```
f=figure; SurfStatView(pval, s, 'RFT-FWE', 'black')
```

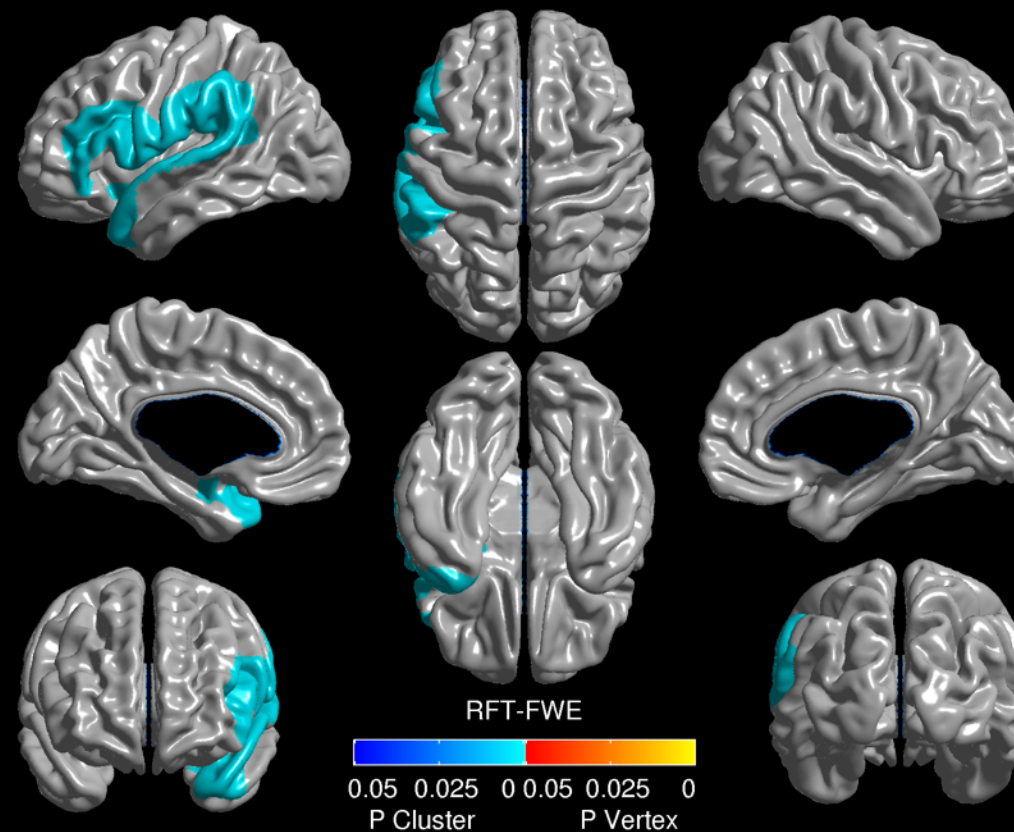


Correction for multiple comparisons

3b. Random field theory–correction (Worsley et al. 1999)

```
[pval,peak,clus,clusid] = SurfStatP(slm,mask,0.01)
```

```
f=figure; SurfStatView(pval, S, 'RFT-FWE')
```



Correction for multiple comparisons

```
>> term(clus)
```

<u>clusid</u>	<u>nverts</u>	<u>resels</u>	<u>P</u>
1	689	3.82	0.0012
2	829	0.56	0.2123
...			

Correction for multiple comparisons

4. FDR-correction (Benjamini and Hochberg 1995)

```
qval = SurfStatQ(slm,mask)
```

```
f=figure;
```

```
    SurfStatViewData(qval.Q, S, 'FDR')
```

```
    SurfStatColLim([0 0.05])
```

or

```
    SurfStatView(qval,S,'FDR')
```

Summary

SurfStat is a swiss army knife to flexibly analyze surface data

- ▶ reading and writing data
- ▶ perform surface-based statistical analysis
- ▶ correct for multiple comparison
- ▶ display results

Other cool stuff you can do

Non-surface based analysis in e.g. thickness in ROI

```
SurfStatLinMod(roi, Model)
```

Analysing volume data (e.g., VBM, DBM, rs-fMRI)

```
SurfStatReadVol1 ...
```

Smoothing on surfaces

```
SurfStatSmooth ...
```

Mapping between volume and surface space

```
SurfStatVol2Surf ...
```

- ▶ visit: <http://www.math.mcgill.ca/keith/surfstat/>